



CLEVE HILL
SOLAR PARK

Cleve Hill Solar Park

Community Newsletter

Cleve Hill Solar Park will commence construction in **October.**



Write to us at:

Freepost: Cleve Hill Solar



Email us at:

info@clevehillsolar.com



Call our Freephone information line:

0800 328 2850



Visit our website at:

www.clevehillsolar.com

Our Engagement

We have recently engaged with local groups and individuals, including

- Faversham Town Council
- Faversham Society
- Solar Cycleway Campaign
- Helen Whately MP
- Swale Borough Council
- Graveney with Goodnestone Parish Council
- Graveney Rural Environmental Action Team

This includes attending a Graveney with Goodnestone Parish Council public meeting on 22nd September, where we were able to discuss the project with local residents.

We are committed to continued engagement and dialogue with the local community, with attendance at the next Graveney with Goodnestone Parish Council meeting on Monday 10th October, as well as meeting with Helen Whately MP in October to further discuss issues raised by local residents.

The pre-construction engagement so far has been invaluable, and we will continue to engage with key stakeholders throughout the construction process to understand how best we can limit potential impacts.

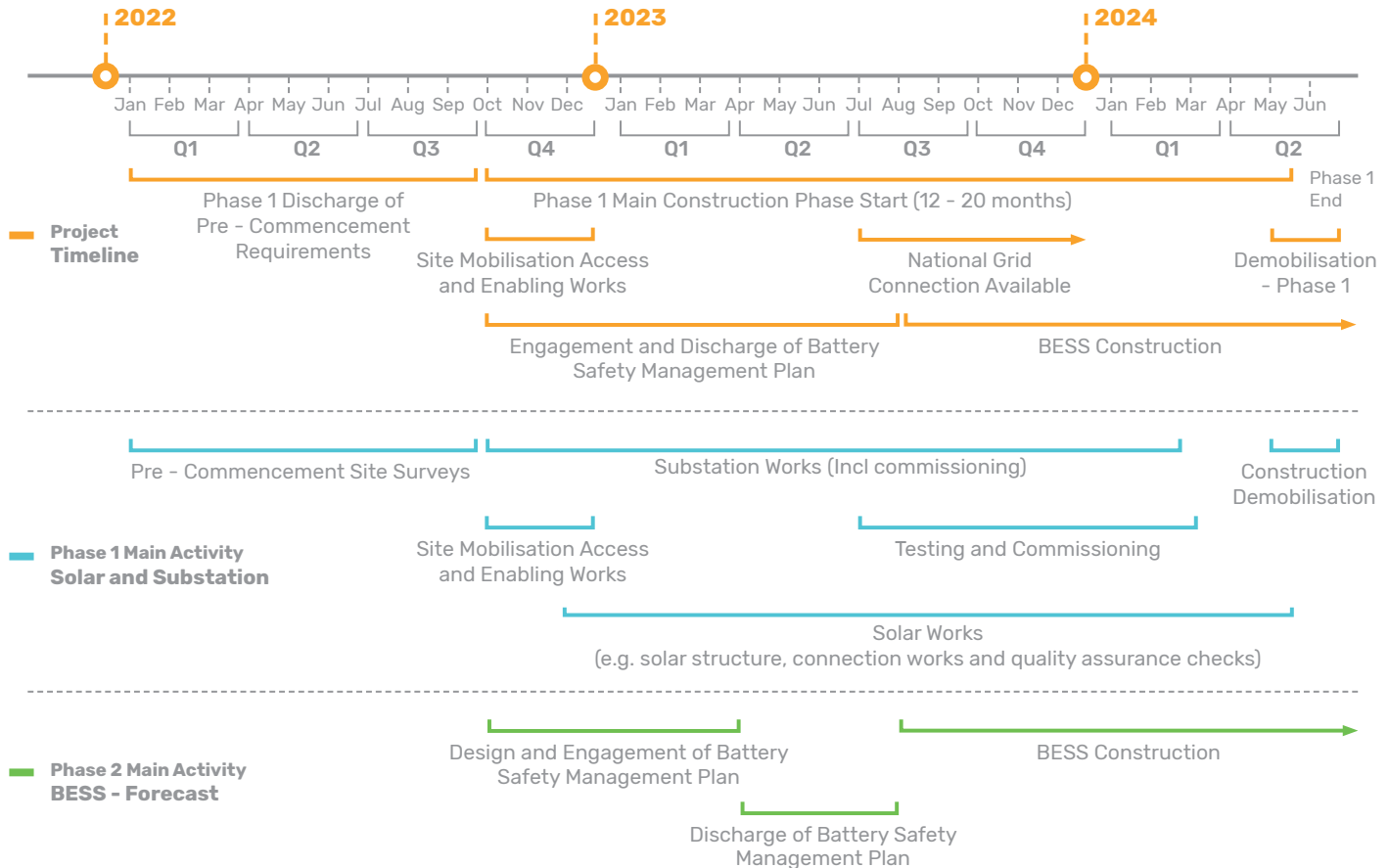
Three Month Lookahead

Currently, ground investigation and early habitat establishment works are occurring on site. The start of enabling works, which signals the commencement of the construction phase, will begin in **October**.

Enabling works will involve further ground investigation associated with the solar structural design which includes pile pull out testing, groundworks to prepare site welfare areas & laydown areas, and the commencement of the installation of perimeter fencing and site roads. These works ensure that we can begin constructing the substation and solar arrays in early 2023.

Our Construction Timeline shows the upcoming construction activity, as well as the wider indicative timeline throughout the construction phase of the project.

Construction Timeline



Construction Traffic Management Plan (CTMP)

In September, all documents required to commence construction were approved by Swale Borough Council. This included the Construction Traffic Management Plan, key details of which can be found below. The full Construction Traffic Management Plan can be viewed in the Schedule of Submissions table on the project website: **www.clevehillsolar.com**

- Construction traffic will be limited to a 20-mph speed limit on Head Hill Road and Seasalter Road.
- HGV movements will be scheduled to avoid school drop-off and pick-up times at Graveney Primary School.
- A Traffic Management Group has been set up fortnightly to discuss any issues with key local stakeholders including Swale Borough Council, Kent County Council, National Highways, Graveney Primary School, GREAT and the parish.
- A Transport Coordination Officer will be appointed to ensure that construction traffic is managed effectively and the commitments in the CTMP are adhered to.
- A pre-construction highway condition survey has been undertaken as part of the development of the CTMP.

Community Engagement

We are exploring how Cleve Hill Solar Park will engage with the community over the life of the project. The details of this will be defined over the coming weeks, which we will share in due course through the project's communication channels and Graveney with Goodnestone Parish Council.

We would expect this to focus on the climate change agenda encompassing educational, wellbeing and energy related measures and will give the opportunity for the community to be part of the selection process.

We will also be working with our appointed contractors to run supply chain and procurement events over the next few months with details to follow. This opportunity will allow the local business community to share supply chain and employment opportunities throughout the construction phase of the project.

Contact Us:



Website: www.clevehillsolar.com



Email: info@clevehillsolar.com



Phone: 0800 328 2850



Freepost: Cleve Hill Solar